

FDA SeriesMEMBER OF

MORRIS GROUP
INTERNATIONAL

"Not Available In The U.S."

Angle Frame Floor Doors

Angle Frame Floor Doors are ideally suited for new installations or for remodeling interior and exterior applications where water tightness is not a concern. Door includes a flush lifting handle and 316 stainless steel hold-open arm with red vinyl grip with automatic lock at the open position.

Door is 1/4" thick diamond plated aluminum, and reinforced 300 psf live load.

Frame is an aluminum extrusion with an 1" continuous anchor flange on all four sides.

Stainless steel hinges with tamper resistant 316 stainless steel bolts and locknuts.

Latch is a aluminum flush lifting handle with staple for padlock by others. Stainless Steel slam latch and recessed padlock provision optionally available.

Finish to be a mill finish, optional bituminous coating on exterior of frame.

Guide Specification

Provide Elmdor® FDA Series, Floor Doors (Specify model number and options). Floor door shall be fabricated from 1/4" aluminum diamond plate reinforced 300 psf live load with a mill finish. The door shall have a stainless steel hinge with tamper resistant stainless steel bolts and locknuts. Latch is a flush aluminum flush lifting handle with staple for padlock with recessed padlock provision optionally available. Finish shall be a mill finish, with optional bituminous coating on exterior of frame.

Member of U.S. Green
Building Council

Page 1 of 3

FDA

New: 08/03/15

Recyclable
Product

MODEL NUMBER AND OPTIONS SELECTION
BASE MODEL NUMBER
☐ FDA Floor Door

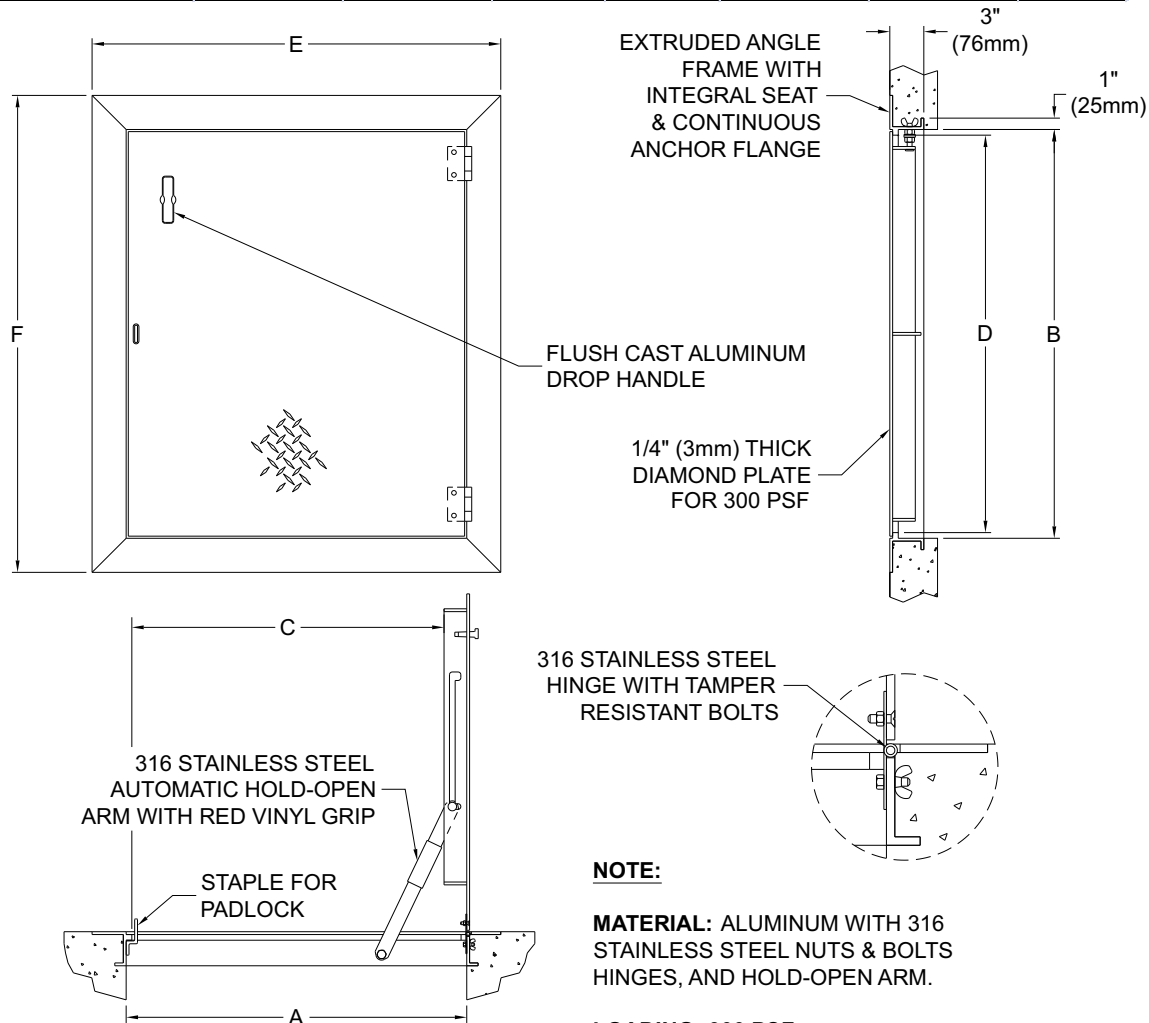
Suffix Options

- ☐ -AF Anodized Finish
- ☐ -BPC Bituminous Coating
- ☐ -INS Insulation Under Cover
- ☐ -SCB Safety Chains and Posts
- ☐ -SRS Slip Resistant Surface
(Bonded to Cover Plate)

STANDARD AVAILABLE SIZES

Special sizes available upon request.

NOMINAL DOOR SIZE	FRAME OPENING		CLEAR OPENING		OVERALL SIZE		WEIGHT
in. (mm)	A in. (mm)	B in. (mm)	C in. (mm)	D in. (mm)	E in. (mm)	F in. (mm)	Lbs. (KG)
24" x 24" (610 x 610)	24" (610)	24" (610)	21" (533)	23" (584)	30" (762)	30" (762)	42 (19)
24" x 30" (610 x 762)	24" (610)	30" (762)	21" (533)	29" (737)	30" (762)	36" (914)	49 (22)
24" x 36" (610 x 914)	24" (610)	36" (914)	21" (533)	35" (889)	30" (762)	42" (1067)	55 (25)
30" x 30" (762 x 762)	30" (762)	30" (762)	27" (686)	29" (737)	36" (914)	36" (914)	57 (26)
30" x 36" (762 x 914)	30" (762)	36" (914)	27" (686)	35" (889)	36" (914)	42" (1067)	64 (29)
30" x 48" (762 x 1219)	30" (762)	48" (1219)	27" (686)	47" (1194)	36" (914)	54" (1372)	80 (36)
36" x 36" (914 x 914)	36" (914)	36" (914)	32" (813)	35" (889)	42" (1067)	42" (1067)	73 (33)
36" x 48" (914 x 1219)	36" (914)	48" (1219)	32" (813)	47" (1194)	42" (1067)	54" (1372)	92 (42)
42" x 42" (1067 x 1067)	42" (1067)	42" (1067)	38" (965)	41" (1041)	48" (1219)	48" (1219)	94 (43)



Dimensions are subject to manufacturer's tolerance of plus or minus 1/4". Elmdor/Stoneman assumes no responsibility for use of void or suspended data. Please visit www.elmdorstoneman.com for most current specifications. © Copyright 2009 Elmdor/Stoneman, City of Industry, CA, A Division of Acorn Engineering Company.

SELECTION SUMMARY & APPROVAL FOR MANUFACTURING

Model Number & Options _____ Quantity _____

Company _____ Date _____

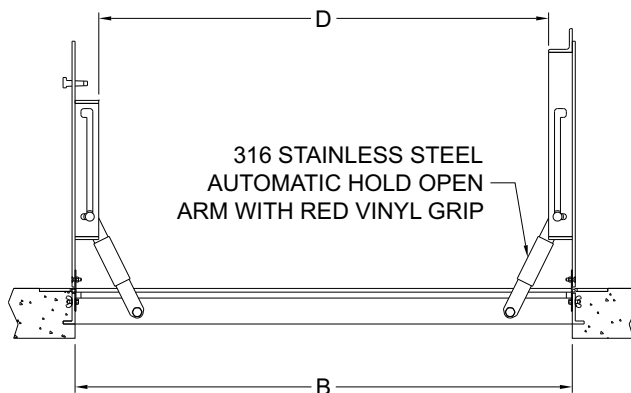
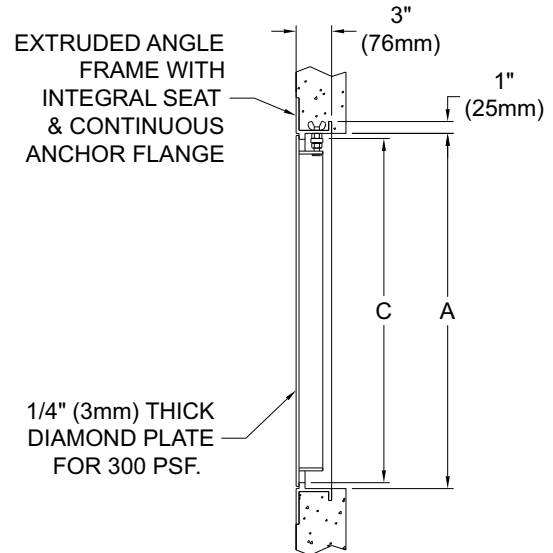
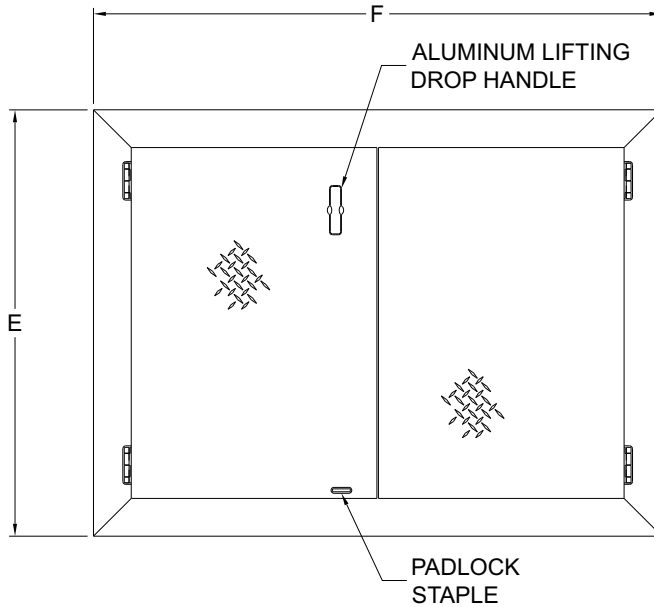
Contact _____ Title _____

Approval for Manufacturing/Signature _____

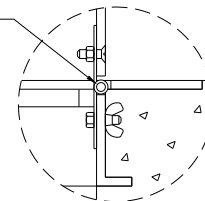
STANDARD AVAILABLE SIZES

Special sizes available upon request.

NOMINAL DOOR SIZE	FRAME OPENING		COVER RECESS		OVERALL SIZE		WEIGHT
in. (mm)	A in. (mm)	B in. (mm)	C in. (mm)	D in. (mm)	E in. (mm)	F in. (mm)	Lbs. (KG)
48" x 48" (1219 x 1219)	48" (1219)	48" (1219)	47" (1194)	41" (1041)	54" (1372)	54" (1372)	123 (56)
48" x 72" (1219 x 1829)	48" (1219)	72" (1829)	47" (1194)	65" (1651)	54" (1372)	78" (1981)	170 (77)
60" x 60" (1524 x 1524)	60" (1524)	60" (1524)	59" (1499)	54" (1372)	66" (1676)	66" (1676)	177 (80)



316 STAINLESS STEEL
HINGE WITH TAMPER
RESISTANT BOLTS


NOTE:

MATERIAL: ALUMINUM WITH 316 STAINLESS STEEL NUTS & BOLTS HINGES, AND HOLD OPEN ARM.

LOADING: 300 PSF.

Dimensions are subject to manufacturer's tolerance of plus or minus 1/4". Elmdor/Stoneman assumes no responsibility for use of void or suspended data. Please visit www.elmdorstoneman.com for most current specifications. © Copyright 2009 Elmdor/Stoneman, City of Industry, CA, A Division of Acorn Engineering Company.

SELECTION SUMMARY & APPROVAL FOR MANUFACTURING

Model Number & Options	Quantity
Company	Date
Contact	Title
Approval for Manufacturing/Signature	